

ReCell.

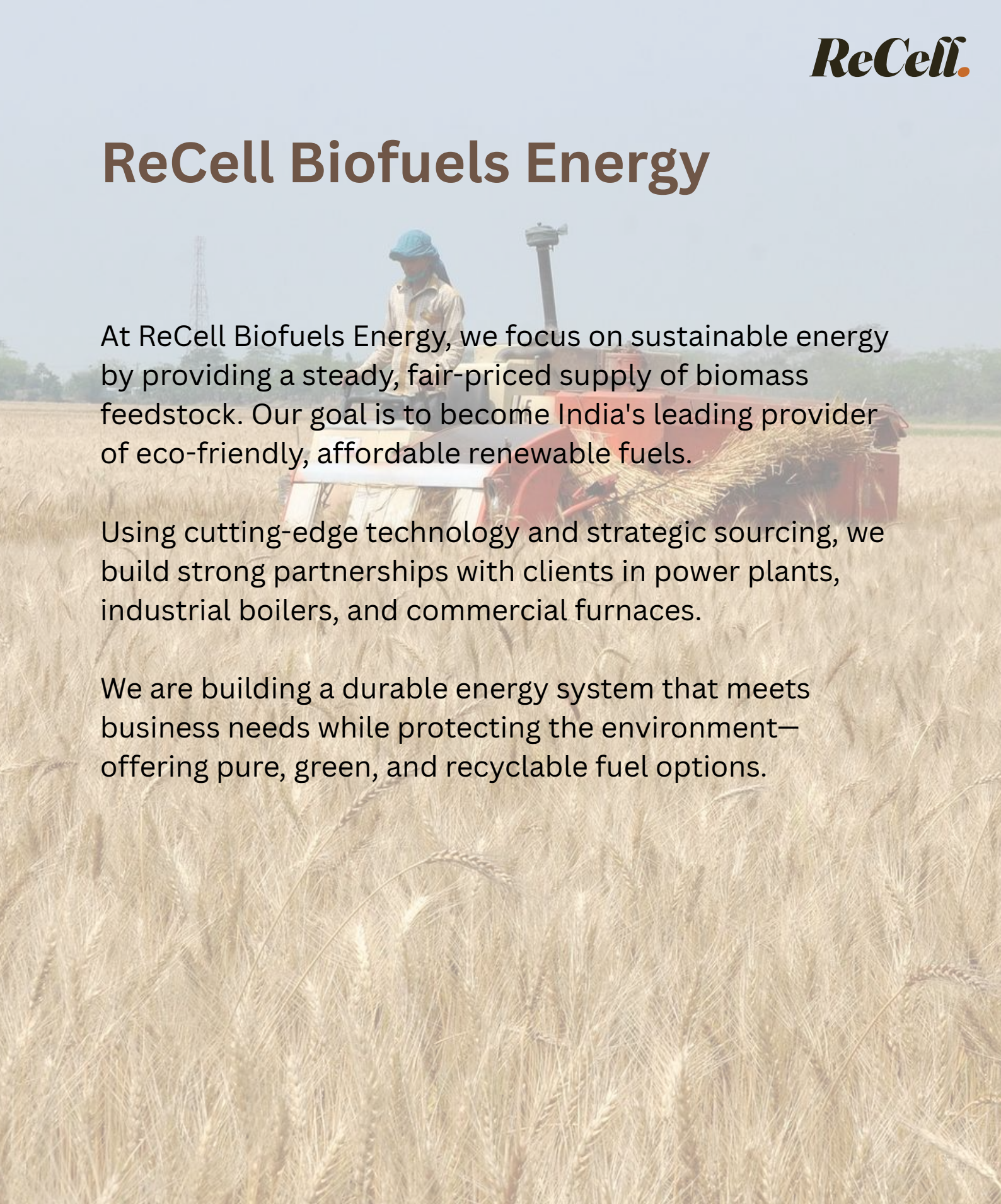
ReCell Biofuels Energy

“Transforming Residue into Resources,
Power into Progress”



Better Air Quality Through Sustainable Green Energy

ReCell Biofuels Energy

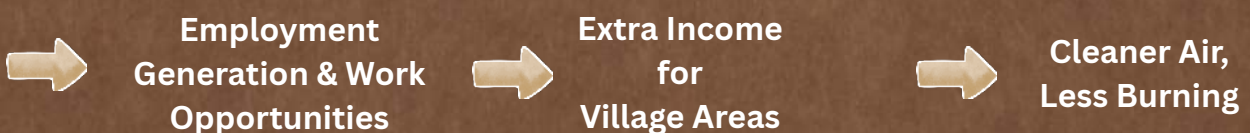


At ReCell Biofuels Energy, we focus on sustainable energy by providing a steady, fair-priced supply of biomass feedstock. Our goal is to become India's leading provider of eco-friendly, affordable renewable fuels.

Using cutting-edge technology and strategic sourcing, we build strong partnerships with clients in power plants, industrial boilers, and commercial furnaces.

We are building a durable energy system that meets business needs while protecting the environment—offering pure, green, and recyclable fuel options.

Economic & Community Impact



ReCell Biofuels Energy

VISION

To eliminate the open-field burning of all agricultural residues across North India – mustard husk, paddy straw, groundnut shell, cotton stalk, bagasse and every other crop waste – and convert millions of tons of “waste” into clean biofuel for industries, with near-zero net CO₂.

MISSION

We collect agro-residues from farmers at fair prices, process them into premium briquettes and pellets using advanced technology, and supply a cost-effective green alternative to coal—boosting rural economies and driving industrial decarbonisation.

OUR 2030 GOALS

- **Lead in biomass fuel solutions across India**

Become the top supplier of carbon-neutral briquettes and pellets for boilers and power plants.

- **Slash industrial carbon footprints & boost local economies**

Help 500+ factories reduce coal use by 50–100 % while creating thousands of rural jobs and returning ₹100+ crore to farmers yearly.

- **Through optimal resource utilisation, support India’s green energy shift**

Prevent burning of 500,000+ tons of agro-waste annually and earn crores in verified carbon credits.

- **Enable sustainable industrial growth**

Deliver heat at up to 75 % below LPG and diesel cost — and give coal users a cleaner burn: 2–8 % ash against coal's 30–40 %, with the datasheet to prove it.

OUR CORE VALUES

- **No More Burning** – Every ton we produce saves a ton of crop residue from fire.
- **Farmer First** – Fair prices, farm-gate pickup, no middlemen.
- **Cleaner Than Coal** – Premium briquettes & pellets, consistent 3,800–4,500 kcal/kg | Ash 2–8 % by feedstock (sawdust lines as low as 2–3 %) | Near-zero net CO₂.
- **Rock-Solid Reliability** – Long-term contracts, dedicated contracted fleet, on-time dispatch 365 days a year.
- **Full Transparency** – 100 % traceability – from the farmer's field to your factory furnace. Every truck ships with its batch lab report.

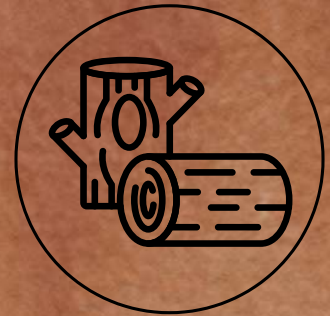
ReCell Biofuels Energy

ABOUT US

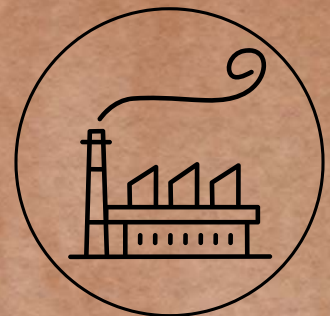
- Founded with a mission to convert agricultural waste into clean, high-value renewable fuel.
- A new-age startup driven by innovation, transparency, and sustainable energy goals.
- Focused on producing high-quality biomass briquettes and pellets using modern, efficient technology.
- Built from a simple belief: waste should become opportunity—not pollution.
- Committed to supporting farmers, industries, and the environment through circular-economy solutions.
- Aiming to become a trusted green-energy partner for industries across India.



**Residual Biomass
Aggregation &
Supply Chain**



**Produce High
Quality Briquettes/
Pellets Products**



**Industrial Ongoing
Contracted Supply**



**BIO
ENERGY**

WHAT ARE BIOMASS BRIQUETTES & PELLETS?

Biomass briquettes and pellets are compact, high-density fuels made from compressed agricultural residues like mustard husk, paddy straw, groundnut shell, cotton stalk, and bagasse—no chemicals or binders needed. They burn cleaner and longer than loose biomass or coal, making them the perfect green alternative for industrial boilers and furnaces.



WHY CHOOSE RECELL BIOMASS FUEL?

- **High Energy Density:** Consistent GCV of 3,800–4,500 kcal/kg – up to 2x the heat of loose waste.
- **Low Ash & Moisture:** Ash 2–8 % by feedstock (vs. coal's 30–40 %), moisture <10 % for efficient, low-smoke burning.
- **Eco-Friendly:** Near-zero net CO₂ – every tonne displaces coal in the furnace and keeps crop residue out of open-field fires.
- **Cost Savings:** Up to 75 % cheaper heat than LPG and diesel, with longer burn time and lower maintenance.
- **Versatile Use:** Ideal for textiles, food processing, chemicals, and power plants – easy to store and transport.

COMPANY STRENGTHS & VALUE PROPOSITION

- 1 PREMIUM BIOMASS**
High-quality biomass briquettes and pellets replacing traditional industrial fuels.
- 2 ECO-FOCUSED**
Promotes eco-friendly energy by converting agricultural residues into renewable, low-emission solid fuels.
- 3 POLICY-ALIGNED**
Aligned with national biomass policies and clean-energy programs supporting India's sustainability objectives.
- 4 PRODUCTION CAPABILITY**
Equipped with reliable machinery ensuring consistent output, stable quality, and efficient daily production.
- 5 MARKET POSITION**
Positioned as a growing biofuel supplier offering dependable, cost-efficient alternatives to fossil fuels.
- 6 REGIONAL ADVANTAGE**
Strategically located near agro-producing regions for strong raw material availability and sourcing.
- 7 ENVIRONMENTAL IMPACT**
Reduces farm-waste burning and supports industries in lowering overall carbon emissions significantly.
- 8 VALUE TO INDUSTRIES**
Delivers cleaner combustion, better efficiency, and improved cost savings for various industrial sectors.

Conclusion

ReCell Biofuels Energy builds its identity on sustainable operations and a future-ready business model. Its commitment to biomass fuels positions it strongly in India's clean-energy shift, supported by resource availability, policy alignment, and rising industrial demand.

BRIQUETTES



MUSTARD BRIQUETTE

GCV ~3,800 kcal/kg
Moisture <10 %
Ash ~8 %
Ø 50–90 mm



GROUNDNUT BRIQUETTE

GCV ~4,200 kcal/kg
Moisture <9 %
Ash ~6 %
Ø 50–90 mm



SAWDUST BRIQUETTE

GCV ~4,000 kcal/kg
Moisture <8 %
Ash ~3 %
Ø 50–90 mm

PELLETS



MUSTARD PELLET

GCV ~3,800 kcal/kg
Moisture <10 %
Ash ~8 %
Ø 6–12 mm



GROUNDNUT PELLET

GCV ~4,200 kcal/kg
Moisture <9 %
Ash ~6 %
Ø 6–12 mm



SAWDUST PELLET

GCV ~4,500 kcal/kg
Moisture <8 %
Ash ~2 %
Ø 6–12 mm

All products lab-tested and traceable.

OUR PROCESS

1

Biomass Raw Material Annual Sourcing

Sourcing agricultural residues directly from farms to ensure steady, reliable biomass availability.



2

Storage & Material Handling Capacity

Properly organized storage areas maintain raw material quality and protect against moisture.



3

Raw Material Testing & Quality Checking

Every batch undergoes moisture, purity, and size checks before entering production lines.

5

Briquette & Pellet Manufacturing

Finished products are tested for calorific value, ash content, and density consistency.



4

Briquette & Pellet Manufacturing

Modern machines compress processed biomass into dense, uniform briquettes and pellets efficiently.

6

Pre-Dispatch Inspection & Packing

Every batch is inspected, weighed, and securely packed to ensure safe transportation.

INDUSTRIES WE SERVE



Ceramic Industry



Pharma Unit



Fabric & Textile Units



Food Processing Unit



Dyeing Plants



Liquor Plants



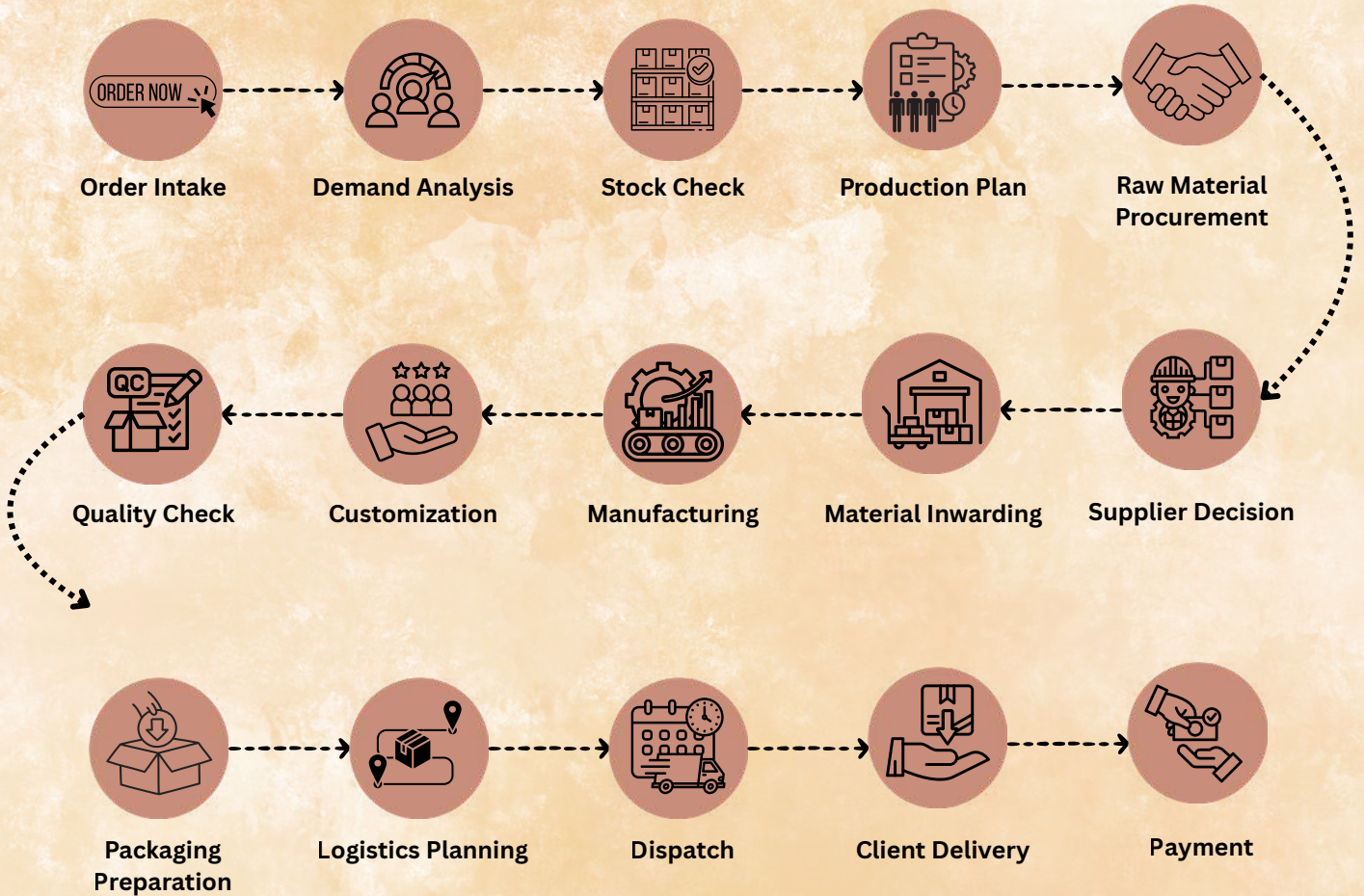
Leather Industries



Thermal Industries

... and many more

OUR COMPLETE PROCESS



LET'S CONNECT TO DISCUSS COLLABORATION

Reach us at:  **+91 88909 80404**
 **+ 91 82091 90461**
 **info@recell.in**
 **www.recell.in**

RECELL BIOFUELS ENERGY

OFFICE: Plot No. D-23, Scheme Transport
Nagar, Sikar Road, Jaipur, Rajasthan
— 303805

Every sample ships with a full GCV, moisture & ash report.